
The Impact of Rainfall Fluctuation on Days and Rubber Productivity in Songkhla Province

Ruang Sri, K.^{*}, Makkaew, K.¹ and Sdoodee, S.

Department of Plant Science, Faculty of Natural Resources, Prince of Songkla University, Hat Yai, Songkhla 90112, Thailand.

Ruang Sri, K., Makkaew, K. and Sdoodee, S. (2015). The impact of rainfall fluctuation on days and rubber productivity in Songkhla Province. *International Journal of Agricultural Technology* 11(1):181-191.

Abstract Recent evidence has revealed anomalous fluctuations of climate in the southern Thailand, particularly in the Songkhla province where is one of the major rubber plantation areas. Therefore, the effects of climate variations on rubber productivity were investigated. The study was conducted in the 4 rubber plantation sites all situated in Hat Yai district, Songkhla province where rubber clone RRIM600 was grown. Rainfall and evaporation data measured at the station in Hat Yai district during 1982-2013 were analyzed. The results showed that the annual rainfall totals increased significantly at the rate of 22.51 mm/year. Likewise, the annual number of rainy days has a significant increasing trend of 0.77 days/ year. During May 2008-March 2012, annual rainfall total and the annual number of rainy days tended to be higher. Particularly in 2011, there was exceptionally high rainfall amounts occurred during summer period leading to twice leaf-defoliations. This climate fluctuation also caused a delay of tapping. During April 2009-March 2012, the accumulated dry rubber yield per year tended to decrease, whereas annual rainfall totals and the annual number of rainy days increased. This may indicate that increasing rainfall amounts with higher rainy days cause a decrease in tapping days per year resulting in the reduction of rubber productivity. However after 2012 rainfall tended to decrease with decreasing of rainy day. Rubber smallholder also adapted to tap with high frequency to increase then increase under the crisis of low rubber price.

Keywords: climate variability, dry rubber yield, rainfall, rainy days, tapping day

Introduction

It is acknowledged that global climate is now changing and its anomalous year-to-year variations have been evident in many parts of the world. Over the past 50 years, a significant rise in the global temperature is very likely due to the anthropogenic-induced increase in greenhouse gas concentrations. One of the most serious concerns with such a change is an increase in extreme events such as floods, droughts and severe tropical storms (e.g., IPCC, 2007a, b; Maslin, 2004; Tressferth, 2003).

^{*} **Coressponding author:** Ruang Sri, K.; **Email:** lemon_2340@hotmail.com

Craufurd and Wheeler (2009) showed that temperature is a major determinant of the plant development. Under warmer climate conditions, crop development stages will be shortened, leading to reduce the yield and production (Sanjeeva and Vijayakumar, 1992; Cynthia and Parry, 1994; Craufurd and Wheeler, 2009). Satheesh and Jacob (2011) illustrated that if both maximum and minimum temperatures increase by 1 °C, natural rubber productivity will reduce by 9-10% in the agro climatic conditions of Kerala.

Variability of rainfall has been recognized as an important factor for agriculture in Thailand as most of the country's agricultural areas are rain-fed that depends heavily upon rainfall. Therefore, the fluctuations of rainfall have considerable agricultural impacts, especially in southern Thailand where is under strong influence of the southwest monsoon which often causes heavy rainfall events and severe floods (Sdoodee, 2007; Limsakul *et al.*, 2010). Rubber is a major industrial crop for natural production in southern Thailand. Naturally, the rubber tree is originally from the tropical rainforest, growing well with mean daily air temperature of 25-28 °C, annual rainfall amounts exceeding 2,000 mm and high number of rainy days ranging from 100-150 days (Watson, 1989). Given the above-mentioned facts, rubber production in southern Thailand may be affected by ongoing climate variability. Hence, the objective of this study was to investigate the effects of climate variability especially rainfall fluctuation on Tapping rubber productivity in Hat Yai district, Songkhla province, southern Thailand.

Materials and methods

In this study, the historical data of annual rainfall totals, the annual number of rainy days and pan evaporation during 32 years (1982-2013) measured at the Kho Hong Meteorological station in Hat Yai district, Songkhla province were used to analyze long-term trends and interannual variability. Rainy days are defined as days with at least 1 mm of rain. The field experiment was conducted in Hat Yai district, Songkhla province to collect the data related to rubber production. Four rubber plantation sites with clones RRIM 600 (7-years old in year 2008) were chosen to be investigated. They were sampled for the assessment of tapping days and latex yield during May 2008-Feb 2014. Dry rubber content of latex was determined (Ruderman *et al.*, 2012), then accumulated dry rubber yield was then assessed as kilogram per rai per year (kg rai⁻¹ year⁻¹). The anomalies of annual rainfall totals were plotted to relate with the yield of rubber. Rainfall amounts, the number of rainy days, tapping days and latex yield in each year during May 2008-March 2012 were assessed and

the mean of each year were compared using Duncan's multiple rang test at the 5% level of significance.

Result and discussion

Our results show that annual rainfall totals in Hat Yai district, Songkhla province during 32 years (1982-2013) have increased significantly by 22.51 mm/year (Figure 1a). A similar significant increase can also be seen in the annual number of rainy days, as Figure 1b showing the increasing trend at the rate of 0.87 days/year. With the increasing trends of both atmospheric variables together, it is suggested that rainfall events in Hat Yai district are getting more frequent but their intensity remain unchanged. From Figure 2, it is also evident that rainfall underwent a remarkable change in comparison with evaporation, leading to unbalance of water availability with surplus rainfall accumulation particularly the period since 1993. There was only short drying period during 1989-1992 when evaporation was higher than rainfall (Figure 2). During 1982-1988, rainy period was interrupted by drying period. Since 1998 onwards, there has been a marked increase of annual rainfall, particularly in year 2000 and 2010, where there were severe floods occurring in Hat Yai district, Songkhla province (Doungmusik and Sdoodee, 2012). It should be noted that over the past 32 year, there was no marked change in evaporation in Hat Yai district (Figure 2).

Figure 3a shows that the drying period in 2008 took place during February and April. This situation was similar to the 32-year climatology of rainfall. Following this period, there was a rainy reason with exceptionally high rainfall amounts starting from May to August. Therefore, the farmer started tapping on the rubber tree in May. In 2008, rainfall reached peak in November with total annual amounts 2,452.8 mm. In year 2009, however, there was abnormally raining during summer months (March until May), therefore, the farmer started tapping in May. Considering total annual rainfall, it was comparable amounts between 2008 and 2009. In year 2010, a drying period in summer was during February and April, then, the rain started in September with the peak in November. This resulted in severe flooding at the end of the year (Figure 3c). The rainfall fluctuations were evident during summer months in year 2011, with noticeably high rainfall amounts (Figure 3d). As a result, leaf defoliation of rubber trees occurred twice causing a delay of tapping. This was due primarily to anomalously high rainfall amounts during summer period, particularly those occurred in March, leading to the outbreak of powdery mildew (*Oidium heveae* Steinm.) and consequently a delay of young leaf emergence. Moraes (1997) reported that the rubber tree normally presents

deciduous behavior with a defoliation period of about 2–3 weeks followed by a new leaf emergence. However, Johnston (1989) showed that an increase of rainfall during summer caused fall leaflets due to the infection of powdery mildew disease. Therefore, open-tapping period in year 2011 was delayed to start in June, and then tapping period was only 9 months leading to a marked decrease of tapping days. It was also found that the rubber yield decreased during high rainfall period. Joseph and Jacob (2010) pointed out that the extreme weather in terms of heavy rain events can substantially reduce harvesting intensity through reduced tapping days.

In 2012 and 2013, annual rainfall tended to markedly decrease comparing with year 2011, they were 1964.7 and 2300.6 mm, respectively (Figure 3).

During May 2008-February 2009, latex yield was low although there was a high tapping days. This was due to the first year of open tapping with low yield per tapping. In 2009, the highest latex yield was found with the highest tapping days because of low rainy days (160 days). Consequently, latex yield tended to decrease in year 2010 and 2011, with lower tapping days (104 days and 87 days, respectively). However, there was no significant difference among year 2009, 2010 and 2011. In 2013 and 2014, smallholders adapted to tap with high tapping frequency to compensate low yield in 2012. Beside smallholder increased tapping frequency because of low rubber price crisis particularly during 2013-2014 (RRIT, 2013)

Table 2 shows that the accumulated dry rubber yields decreased during May 2010- March 2012 compared with that during Apr 2009-Mar 2010. This was due to a significant decrease of the tapping days. It was remarkable that, the number of rainy days affected the tapping days under fluctuation rainfall. Jiang (1988) also reported that high normally rainfall causes less production of latex yield because of less sunshine and fewer favorable days of tapping. In 2013 and 2014 smallholder could increase tapping day because of lower rainy days.

Dry rubber content (%DRC) of rubber tree among the four years of tapping was no significantly different (Figure 4), and percentage dry rubber content varied from 30.13 to 32.68 percentages, although there was rainfall Fluctuation. This implied that there was no impact of fluctuation rainfall on dry rubber content.

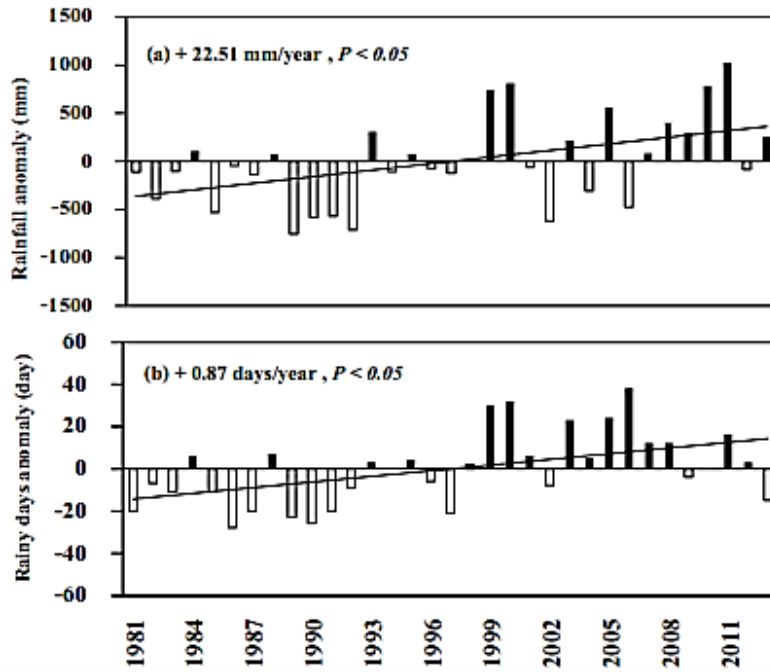


Figure 1. Anomalies and the linear trends of annual rainfall totals (a) and the annual number of rainy days (b) during 1981-2013 in Songkhla province.

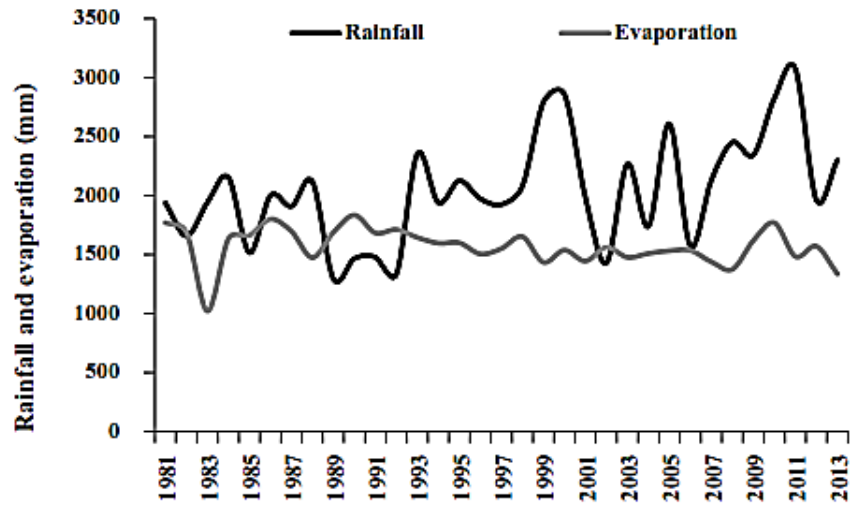


Figure 2. Changes of annual rainfall totals and annual evaporation during 1981-2013 in Songkhla province

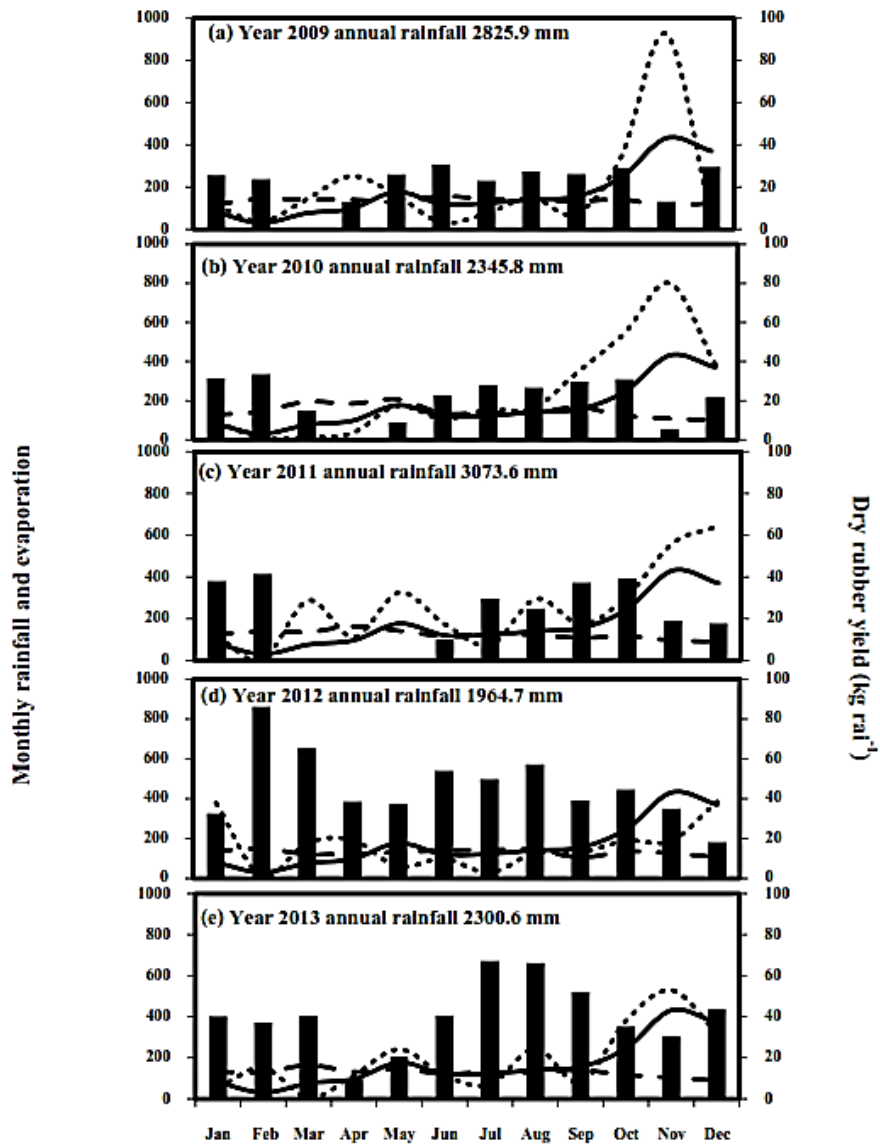


Figure 3. Monthly rainfall, evaporation , dry rubber yield during 2008- 2013 and the 30- year rainfall average in Songkhla province.

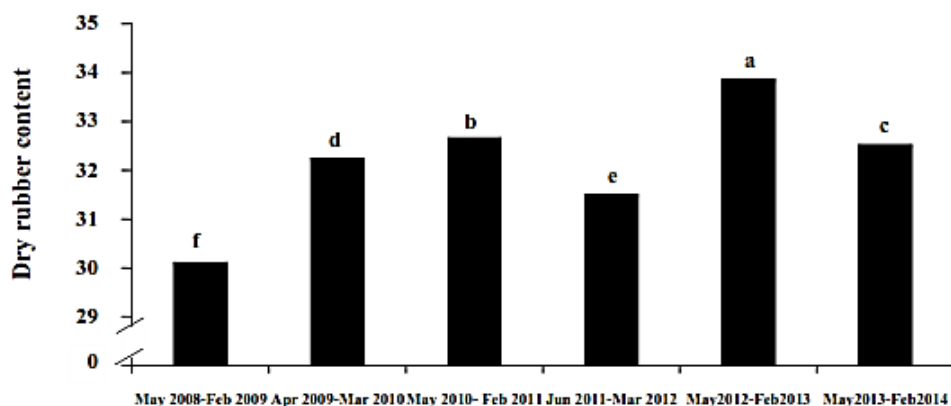


Figure 4. Percentage of dry rubber content (DRC) of rubber trees during May 2008-March 014 in Hat Yai district, Songkhla province. Means with different superscripts in each column indicate significant difference ($P \leq 0.05$) by Duncan's multiple range tests

Table 1. The annual number of rainy days, annual tapping days and latex yield during May 2008- Mar 2014 at Hat Yai district, Songkhla province.

Year	Rainy Days	Tapping Days	Latex yield	
			(g t ⁻¹ t ⁻¹)	(kg t ⁻¹ month ⁻¹)
May 2008-Feb 2009	176 ^b	114 ^d	49.95 ^d	0.66 ^c
Apr 2009-Mar 2010	160 ^d	152 ^c	79.32 ^c	1.12 ^a
May 2010- Feb 2011	164 ^c	104 ^e	76.37 ^c	0.95 ^b
Jun 2011-Mar 2012	180 ^a	87 ^f	75.95 ^c	0.91 ^b
May2012-Feb2013	137 ^f	176 ^a	94.45 ^b	0.72 ^c
May2013-Feb2014	148 ^e	169 ^b	122.85 ^a	0.93 ^b
F-test	**	**	**	**
C.V. (%)	4.10	9.30	17.20	12.21

Means with different superscripts in each column indicate significant difference ($P \leq 0.05$) by Duncan's multiple range tests

Table 2. Annual tapping days and accumulated dry rubber yield during May 2008- Mar 2014 at Hat Yai district, Songkhla province.

Year	Tapping days	Accumulated dry rubber yield
		(kg rai ⁻¹ year ⁻¹)
May 2008-Feb 2009	114 ^d	162.16 ^f
Apr 2009-Mar 2010	152 ^c	290.98 ^b
Mar 2010- Feb 2011	104 ^e	253.45 ^d
Jun 2011-Mar 2012	87 ^f	244.23 ^e
May2012-Feb2013	176 ^a	284.45 ^c
May2013-Feb2014	169 ^b	341.51 ^a
F-test	**	**
C.V. (%)	9.30	2.29

Means with different superscripts in each column indicate significant difference ($P \leq 0.05$) by Duncan's multiple range test

Conclusion

During the 30-year period, annual rainfall totals in Songkhla province significantly increased with higher annual number of rainy days. This leads to rainfall events are getting more frequent but their intensity remain unchanged. The results also indicated that there were seasonal to inter annual fluctuations in distribution patterns of rainfall. During April 2009-March 2012, heavy rain events caused decreases in tapping days, leading to the reduction of rubber productivity. Furthermore, rainfall occurred during summer period caused the breakout of leaf disease, particularly with powdery mildew.

Acknowledgement

This work was supported by the Higher Education Research Promotion and National Research University Project of Thailand, Office of the Higher Education Commission. Financial support was also provided by Annual Budget in 2012 and 2013. Furthermore, we would like to thank Kho Hong Meteorological Station at Hat Yai district, Songkhla province for providing the meteorological data.

References

- Craufurd, P. Q. and Wheeler, T. R. (2009). Climate change and the flowering time of annual crops. *Journal of Experimental Botany* 60:2529-2539.
- Cynthia, R. and Parry, M. L. (1994). Potential impact of climate change on world food supply. *Nature* 367:133-138.
- Doungmusik, A. and Sdoodee, S. (2012). Enhancing the latex productivity of *Hevea brasiliensis* clone RRIM 600 using ethylene stimulation. *Journal of Agricultural Technology* 8:2033-2042.
- IPCC (2007a). Climate change (2007). The Physical Science Basis. Summary for policymakers. Paris: WMO/UNEP. pp. 21.
- IPCC (2007b). Climate change (2007). Impacts, Adaptation and Vulnerability. Contribution of Working Group II to the Fourth Assessment Report of the Intergovernmental Panel on Climate Change. UK: Cambridge. pp. 7-22.
- Jiang, A. (1988). Climate and natural production of rubber (*Hevea brasiliensis*) in Xishuangbanna, southern part of Yunnan province, China. *Journal of Biometeorological* 32:280-282.
- Johnston, A. (1989). Diseases and Pests. New York: Longman Scientific and Technical. pp. 413-458.
- Joseph, T. and Jacob, J. (2010). Supply instability in natural rubber owing extreme and unusual weather events and impact on price formation. Proceedings of the International workshop on climate change and rubber cultivation: R and D priorities July. pp. 28-30.
- Limsakul, A., Limjirakan, S. and Sriburi, T. (2010). Observed changes in daily rainfall extremes along Thailand's coastal zone. *Journal of Environmental Research* 32:49-68.
- Maslin, M. (2004). Global Warming. Oxford: Oxford University.
- Moraes, V. H. F. (1977). Rubber. In Alvim, P. T. and Kozlowski, T. T. (Eds.), *Ecophysiology of tropical crops*. New York: Academic.
- RRIT. (2013). Trend of latex price in (2013). Department of Agriculture. Ministry of Agriculture and Cooperatives.
- Ruderman, S., Kangsawadworakul, P., Vibooniun, U., Mongkolporn, O. and Chreatin, H. (2012). Mitochondrial/cytosolic acetyl coA and rubber biosynthesis genes expression in *Hevea brasiliensis* latex and rubber yield. *Kasetsart Journal Natural Science* 46:346-362.
- Sanjeeva, R. P. and Vijayakumar, K. R. (1992). Climatic requirements. In Sethuraj, M. R., Mathew, N. M. (Eds.), *Natural Rubber: Biology, Cultivation and Technology*. London: Elsevier
- Satheesh, P. R. and Jacob, J. (2011). Impact of climate warming on natural rubber productivity in different agro-climatic regions of India. *Natural Rubber Research* 24:1-9.
- Sdoodee, S. (2007). The influence of global warming on phenological change of mangosteen (*Garcinia mangostana* L.) in Songkhla. Proceedings of the 33rd Congress on Science and Technology, Thailand (STT33) "Science & Technology for Global Sustainability", Nakhon Si Thammarat, 18-20 October 2007. pp. 3

- Tressferth, K. E. (2003). The global hydrological cycle: How should precipitation change as climate change?. Proceedings of A presentation on scoping meeting of IPCC; WGI Forth Assessment Report, Potsdam, Germany.
- Watson, G. A. (1989). Climate and soil. New York: Longman Scientific and Technical. pp. 125-164.

(Received: 25 September 2014, accepted: 24 December 2014)